

Basin Installation Instructions

Notes:

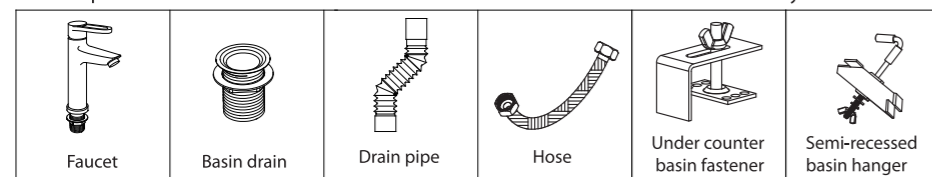
1. Please leave the instructions for the end-user;
2. Please read the instructions carefully before installation;
3. Please install according to the relevant steps to avoid unnecessary losses due to improper installation;
4. Please prevail in kind for the illustrations of the products and components in the instructions are for reference only;
5. The instructions include installation, care and maintenance information;
6. The information is based on the latest product conditions at the time of printing. The company reserves the right to change product characteristics and packaging at any time without prior notice.
7. The products with antibacterial properties mainly refer to the antibacterial effect of flushing surface on Coliform and Staphylococcus aureus according to JC / T 897-2014 standard;
8. It is recommended to use the matching basin waste of JOMOO. The recommended models for the basin with overflow hole: 91103-1C1-I011 push-open waste, 91104-1C1-I011 flip over waste; the recommended models for the basin without overflow hole: 91169-1B-1 push-open waste, 91171-1B-1 waste with strainer plate. The basin waste needs to be purchased by the user separately.

Tools needed by user:

Scissors / Pencil(for drawing line) / Jigsaw(for sawing lavatory countertop) / Drill / Tape measure / Ruler Adjustable wrench / Thread sealing tape

Parts not included in the package, as follow:

(No more preparation if the accessories are supplied. Please find the accessories details on the description)
* Please prevail in kind for the illustrations of the accessories below are for reference only.

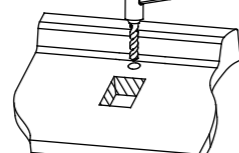
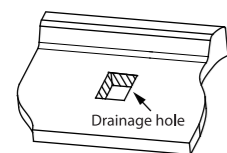


1>.Installation of art basin

1. Drill the drainage hole
Drill a drainage hole on the countertop (so as to install a drain, the shape is determined by yourself) according to the trace of the drainage hole obtained by measuring the art basin, then grind the edges and corners of the hole.

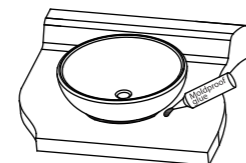
2. Drill the faucet pilot hole
Drill a suitable faucet pilot hole on countertop according to the size of faucet installation position, making sure enough insatllation space are reserved, for it may cause the pull lever of the drain could not be installed or used if it's too close to the wall.

*It is unnecessary to drill the hole on the countertop as there is a faucet hole in the art basin.



3. Fixation of art basin

1. Carefully set the basin on the countertop, adjust the basin to fit with the opening holes.
2. Apply evenly around the basin body with moldproof glue.



2>.Installation of counter basin

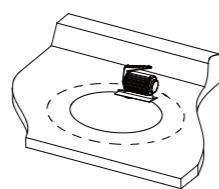
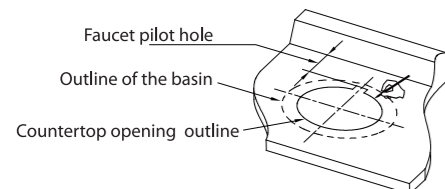
1. Cutting the countertop opening

1. Turn the basin upside down on the countertop, then trace the outline along the basin edge (dotted line as shown). Remove the basin and draw the countertop opening outline (solid line as shown) according to the dimension of the basin.

*Note: Please taking into account the dimension of faucet hose, and a faucet pilot hole should be reserved on the countertop if the basin is without it.

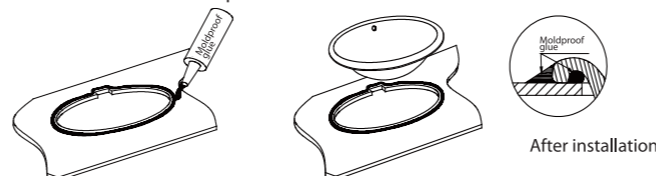
2. Cut the countertop opening hole by following the solid line, grind the edges and corners of the opening.
3. Drill a pilot hole for faucet installation according to the dimension of the faucet and countertop.

*This description only applies to basin without faucet hole.



2.Installation of above-counter basin

1. Apply evenly around the basin opening with moldproof glue.
2. Carefully set the basin on the countertop, lightly press to keep tight, then apply moldproof glue between the basin and countertop.

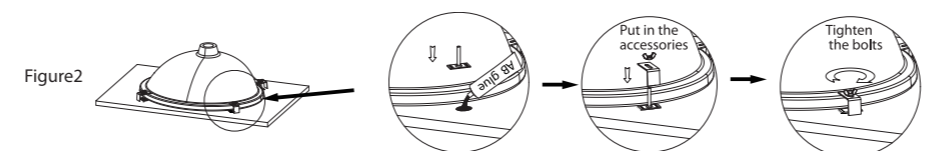
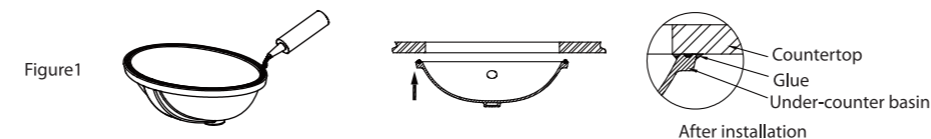


3. Installation of under platform basin

1. Butt joint installation of under platform basin and table top: place the table top upside down on the cabinet or flat objects, pay attention to handle it with care to prevent scratches on the table top, then put the under platform basin flat, clean up the table top and under platform basin, evenly fill MS modified silane sealant in the inner ring of under platform basin mouth, align with the installation hole, buckle the under platform basin upside down on the table top and press it tightly, and finally apply the sealant evenly on the table. After installation, it is necessary to observe whether the basin under the platform is aligned with the installation hole, without edge leakage, otherwise it will affect the appearance. (picture1)
2. Reinforcement of basin hook under the platform: the product must be fixed with fasteners when it is installed. High strength AB glue shall be evenly applied to the bonding position of the metal sheet reserved on the platform. The metal sheet of the fastener shall be pasted forcefully. Finally, the L-shaped sheet and bolt shall be put in for locking and fixation. (Figure 2).

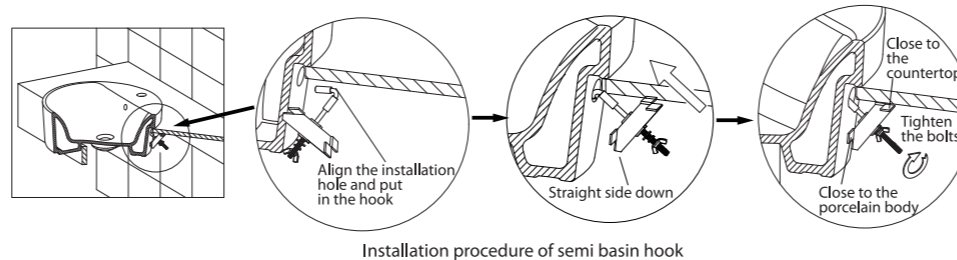
Warning:

- Only AB glue is allowed to be used in the fastener of this product, and epoxy resin glue, sealing materials with larger volume or strong shrinkage after hardening (such as dolomite glue) are forbidden to be used in the rest, and our company is not responsible for the loss caused by this.
- After installation, it needs 24 hours natural air drying (48 hours in winter). Before air drying, it is not allowed to use or carry heavy objects.



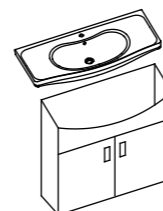
4. Semi basin installation

1. The semi embedded basin installation mode of the adaptive cabinet refers to the basin installation.
2. Semi inlaid basin installation: This product must be reinforced by hook when it is installed. Put the hook in the ceramic installation hole, adjust the direction, put the accessories, and then screw the bolt for locking reinforcement. Note: The hook fittings on the left and right sides are straight side down.



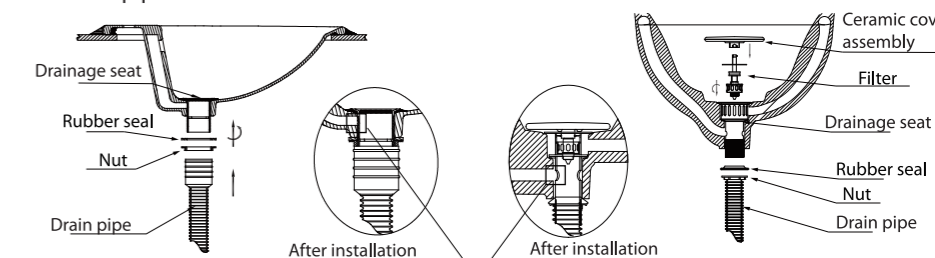
3>.Installation of cabinet basin

Install the cabinet basin according the instructions of the cabinet.
Note: It is not recommended to install straight-sided basins or integral basins against the wall on the left and right sides. Because the ceramics are made of firing, they are slightly deformed and not absolutely right-angled. There may be gaps when installing against the wall.



4>.Installation of basin drain

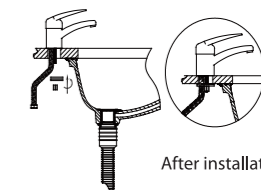
Install the drain on the water outlet of the basin as the below figures shown, then connect it to the drain pipe.



Note: After installation, the overflow hole of the drain should be aligned with the overflow outlet of the basin.

5>.Installation of faucet

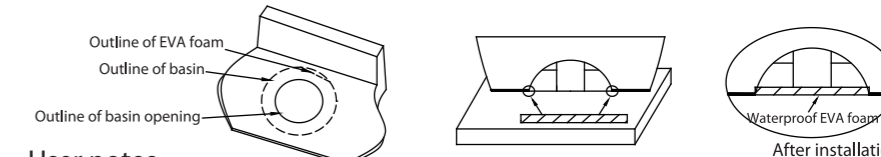
Install the faucet on the countertop or the basin according to the installation instructions of the faucet, and connect the other joint of the hose to the water supply switch.



6>.The installation of water fender

Firstly, trace the installation outline of Basin and EVA foam, then install the EVA foam following the outline (clean it before installation), the steps as below: Tear off the seal of the EVA foam bonding surface, attach the EVA foam to its outline, then install the basin following the installation outline (see the basin installation steps) to ensure that the ceramic surface and EVA foam are closely attached. Moldproof glue can be used to strengthen the sealing on the junction. Finally, cut off the extra EVA foam. (If the EVA foam is bonded for many times, which results in insufficient adhesion, you can apply moldproof glue on the bonding surface and then perform the bonding. The steps are the same as above.)

*The installation is only for the basin with EVA water fender.



User notes

1. It is recommended to clean the basin with neutral detergent every week, and then wipe it with a soft cloth to avoid dirt deposition.
2. Do not clean with highly corrosive detergent and supplies such as nylon brushes, scouring pad and steel wool, otherwise the surface of the basin will be damaged.
3. After applying the moldproof glue, the excess glue should be cleaned with a dry cloth to prevent it from affecting the appearance, and left to harden for more than 24 hours.
4. The weight on the box is for reference only. The actual weight is subject to the actual product.

Warning

1. Please choose the detergent that meets the requirements of national standards, otherwise it may damage the glaze layer or cause leakage.
2. This product is forbidden to use any cement installation, and JOMOO shall not be responsible for all product cracks caused by cement installation.
3. It is forbidden to use epoxy resin glue, sealing materials with larger volume or strong shrinkage after hardening (such as dolomite glue), and JOMOO shall not be responsible for all product cracks caused by this.
4. For products without overflow holes, please pay attention to close the faucet in time after the water in the basin is full to prevent the water from flooding out and flooding the countertop or bathroom and causing loss.
5. It is forbidden to press the front end of the product vigorously after installed, otherwise there is a risk that the product may fall and hurt someone.
6. It is forbidden to hit the ceramic to prevent from damage, leakage, displacement, rollover of basin, and personal injury, etc.
7. Please use this product above 0 °C.
8. For products without overflow holes, it is necessary to turn off the tap when the basin is full of water, so as to prevent water from overflowing and flooding the table or toilet and causing losses.

JOMOO

JOMOO KITCHEN & BATH CO., LTD.

Add: JOMOO Industrial Park, Nan'an City, Fujian Province, China.

Tel: 400-1919-999 Fax: +86 595 86142998 P.C.:362308

http://www.jomoo.com.cn E-mail: jomoo@jomoo.com.cn